

p 847.446.9600  
f 847.446.9603

THE HUDSON COMPANY 851 SPRUCE STREET, WINNETKA, ILLINOIS 60093

## Elegant Gem

873 SPRUCE  
WINNETKA, ILLINOIS



LISTING AGENT HOWARD AND SUSAN MEYERS

CONTACT c 847.778.1394 Howard  
c 847.778.1394 Susan  
o 847.446.9600  
howard@thehudsoncompany.com  
susan@thehudsoncompany.com

## Property Summary



873 SPRUCE  
WINNETKA, ILLINOIS



**LOT SIZE** • 90 X 121

**BUILT** • 2005

**ROOMS** • 12 rooms/5 bedrooms/5.1 baths

**PROPERTY FEATURES**

- Elegant brick and limestone home in a very convenient location
- Grandly scaled rooms with striking architectural details and quality materials
- Chef's kitchen outfitted with top appliances, beautiful granite countertops and custom cabinetry
- Large family room adjacent to kitchen with wood-burning limestone fireplace
- Exquisite master bedroom retreat with spa bath
- Three additional family bedrooms on the second floor
- Third floor is a wonderful space for additional bedroom or office
- First floor includes a private guest suite
- Spectacular lower level with fireplace and custom bar

**LOCATION**

- Incorporated Winnetka
- Close to train, schools, shopping

**SCHOOLS**

- Crow Island K - 4
- Skokie 5-6
- Carlton W. Washburne School 7-8
- New Trier Northfield campus 9
- New Trier Winnetka campus 10-12

873 SPRUCE  
WINNETKA, ILLINOIS

## Grand Entry

The impressive foyer features oversized mahogany doors, inlaid limestone floors, arched doorways and a very dramatic spiral staircase. Rare, exceptionally detailed moldings and wainscot paneling create an elegant, timeless interior. Dramatic columns flank the entrance to the adjacent family room.



873 SPRUCE  
WINNETKA, ILLINOIS

## Living Room

The beautiful living room features even more elaborate details such as an arched window, classic columns, and striking Brazilian cherry floors with marble insets.



873 SPRUCE  
WINNETKA, ILLINOIS



Living Room  
Continued



873 SPRUCE  
WINNETKA, ILLINOIS



## Dining Room

The same striking elements found in the living room carry through to the formal dining room.



873 SPRUCE  
WINNETKA, ILLINOIS

## Dining Room Continued

This elegant room is perfectly scaled for small and large gatherings of family and friends.



873 SPRUCE  
WINNETKA, ILLINOIS

## Family Room

The oversized custom limestone fireplace is the focal point of the welcoming family room. Very special ceiling and molding details create a warm and inviting space.



p 847.446.9600  
f 847.446.9603

THE HUDSON COMPANY 851 SPRUCE STREET, WINNETKA, ILLINOIS 60093

873 SPRUCE  
WINNETKA, ILLINOIS

## Family Room Continued



873 SPRUCE  
WINNETKA, ILLINOIS

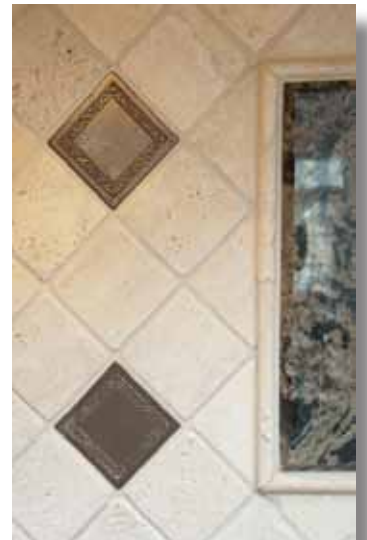
## Gourmet Kitchen

The gourmet kitchen offers the ideal work space for the most discriminating cook. The custom combination of wood and white painted rope trimmed cabinets compliment the gorgeous granite countertops. Top of the line appliances include a Subzero refrigerator, Bosch dishwasher, Viking range with double oven, 6 burners and griddle, and Uline wine refrigerator. Custom details on the cabinetry and limestone backsplash complete this state of the art kitchen.



873 SPRUCE  
WINNETKA, ILLINOIS

## Kitchen Continued



873 SPRUCE  
WINNETKA, ILLINOIS

## Breakfast Area

The sundrenched breakfast room features a curved wall of large windows and a French door that opens to the brick patio.



873 SPRUCE  
WINNETKA, ILLINOIS

## First Floor Guest Room

The convenient first floor bedroom with adjacent bath is the perfect hide-away for guests or nanny suite.



873 SPRUCE  
WINNETKA, ILLINOIS



## Master Suite

Located down its own private curved hallway is the peaceful master suite. The same craftsmanship used on the first floor is evident in the large bedroom with Brazilian cherry floors with inlaid maple details and marble insets. Many large windows and a Juliet balcony highlight this perfect retreat.



873 SPRUCE  
WINNETKA, ILLINOIS

## Master Bath

The master bath features limestone floors and countertops. Two large vanities create separate dressing areas with his and hers sinks and one includes a seated vanity. There is a corner whirlpool tub and a separate oversized walk-in rainshower that creates a serene spa like setting.



873 SPRUCE  
WINNETKA, ILLINOIS

## Additional Bedroom / Office

The bedroom at the top of the stairs is currently used as an office. A private bath and large closet adjoin this space.



873 SPRUCE  
WINNETKA, ILLINOIS

## Additional Bedrooms

Also located on the second floor are two additional bedrooms with handsome moldings and rich cherry floors. A shared limestone bath features a large vanity and tub/shower combination.



873 SPRUCE  
WINNETKA, ILLINOIS

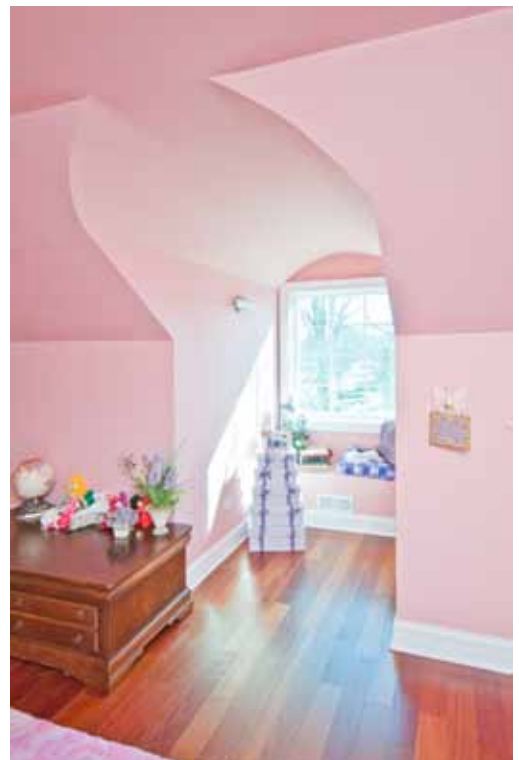
## Bedrooms Continued



873 SPRUCE  
WINNETKA, ILLINOIS

## Third Floor Escape

The third floor escape offers a great space for a fun playroom, a home office or 6th bedroom.



873 SPRUCE  
WINNETKA, ILLINOIS

## Lower Level

This incredible lower level features a huge recreational space that is dressy enough for entertaining but a comfortable place for just hanging out.



873 SPRUCE  
WINNETKA, ILLINOIS

## Lower Level Continued

A large kitchen/bar area is outfitted with two drink refrigerators; sink custom lit cabinetry and granite counters. There is also a fireplace with gas starter.

An extensive wall of built in cabinetry with stone tile accents and bookcases houses a large screen TV and entertainment center.



873 SPRUCE  
WINNETKA, ILLINOIS

## Outdoor Spaces

A large brick paver patio is the focus of the rear yard. Here you will find a sanctuary, a place to catch your breath, shaded by large oaks. The front courtyard of brick pavers and wrought iron fence that encircles the front of the home sets the stage for this remarkable residence.



p 847.446.9600  
f 847.446.9603

THE HUDSON COMPANY 851 SPRUCE STREET, WINNETKA, ILLINOIS 60093

873 SPRUCE  
WINNETKA, ILLINOIS

## Outdoor Spaces Continued



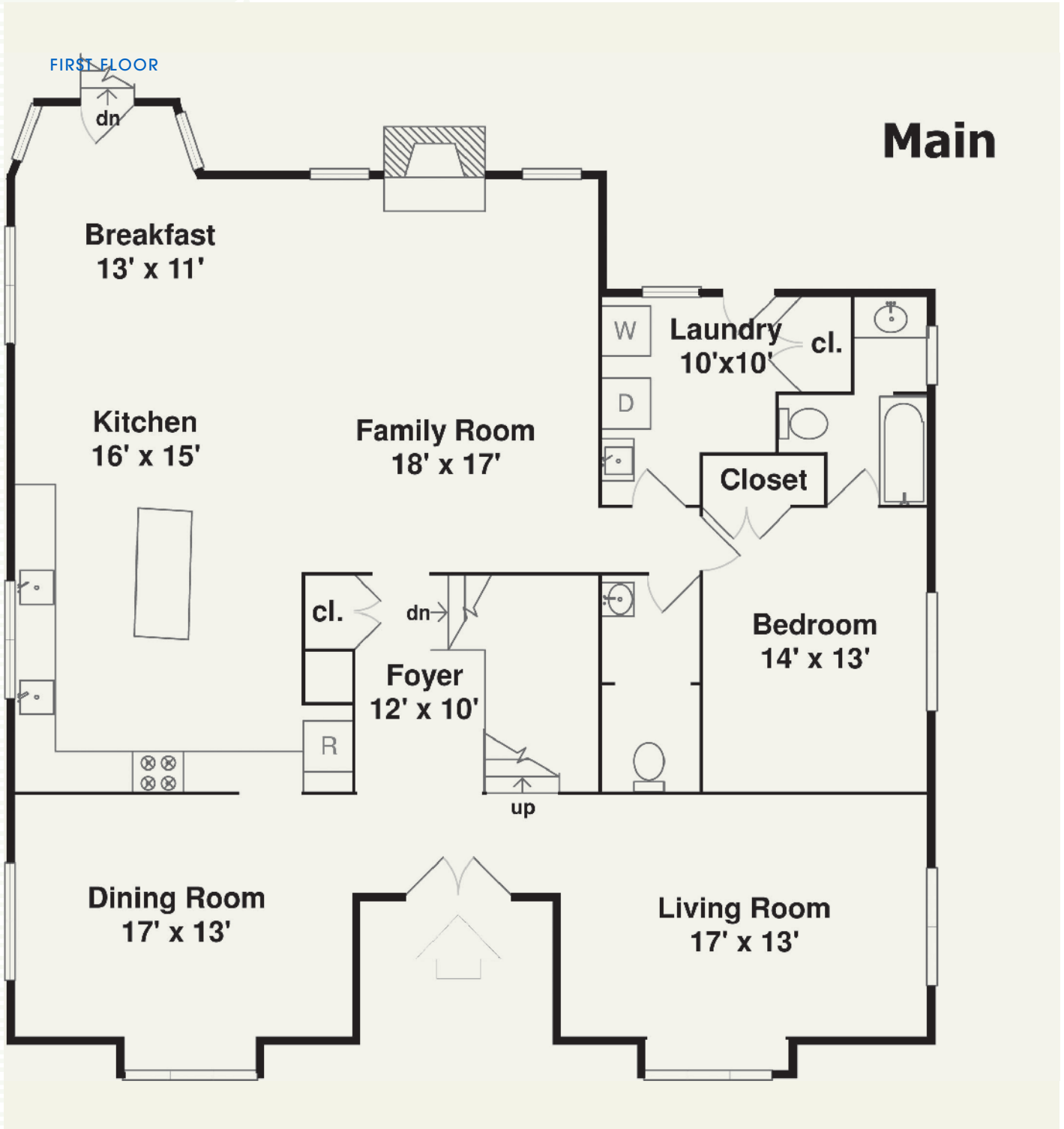
873 SPRUCE  
WINNETKA, ILLINOIS

## Outdoor Spaces Continued



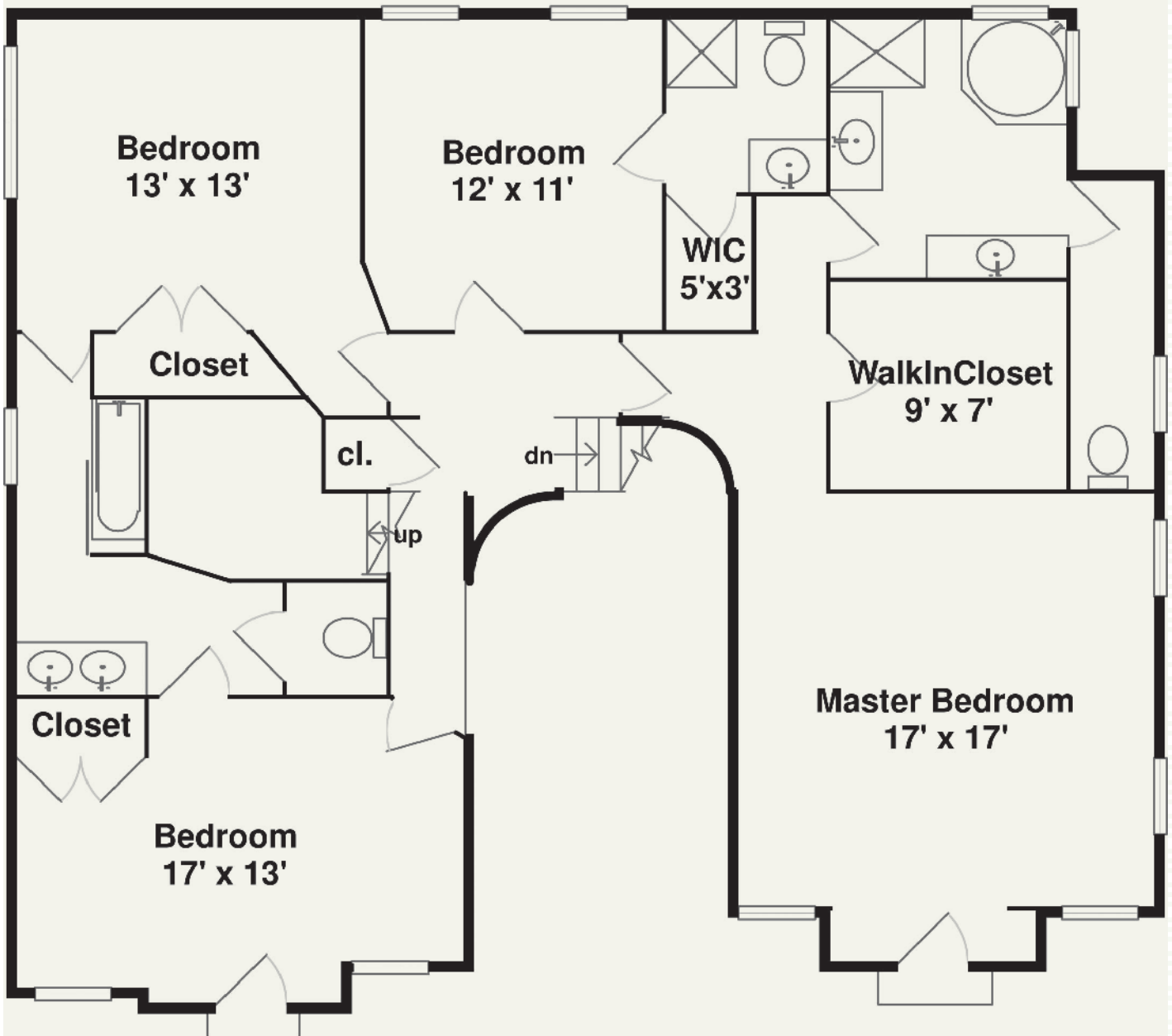
873 SPRUCE  
WINNETKA, ILLINOIS

# Main



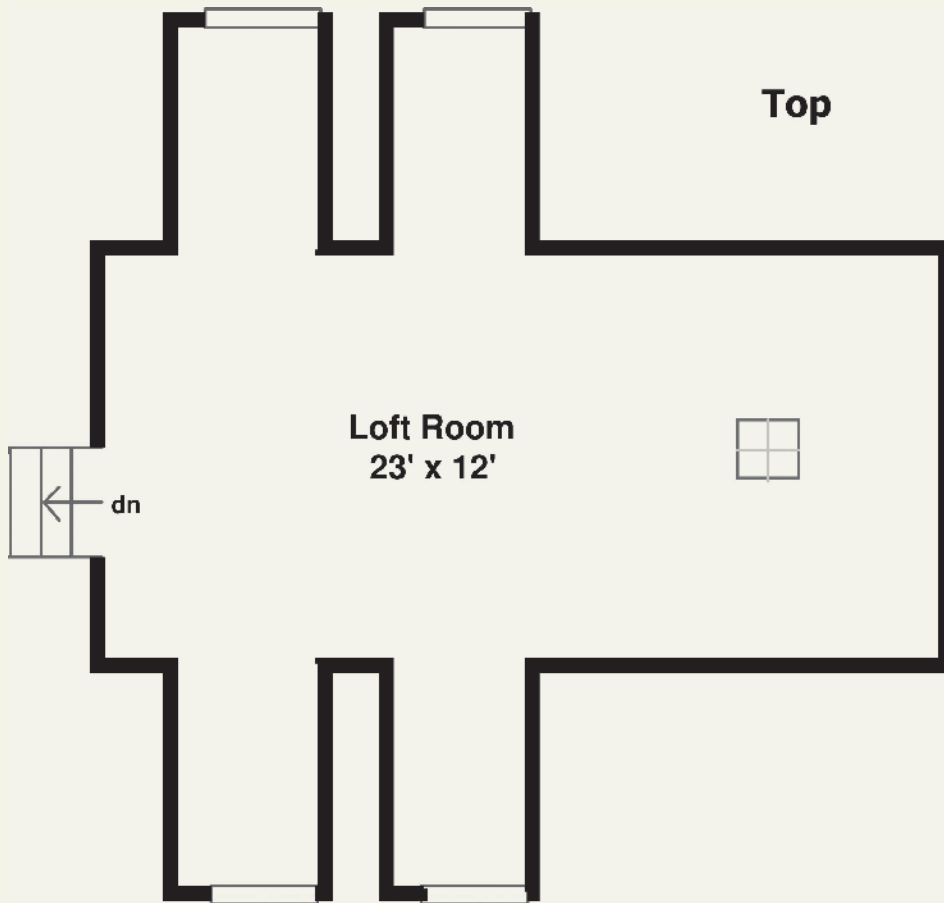
SECOND FLOOR

Upper



873 SPRUCE  
WINNETKA, ILLINOIS

THIRD FLOOR



LOWER LEVEL

